


3. Reference

3-1. Troubleshooting Guidelines

Malfunctioning unit

Normal		Possible Causes <ul style="list-style-type: none">Electrical malfunction of CPUPossible contact problem (open circuit) with programming buttons on the lubricators' control panel	Troubleshooting Steps <ul style="list-style-type: none">Reset the unit.If technical difficulty continues, please contact your local supplier or manufacturer for further assistance.
Malfunction		<ul style="list-style-type: none">Possible electrical malfunction of CPU or circuitry	<ul style="list-style-type: none">Reset the unit.If technical difficulty continues, please contact your local supplier or manufacturer for further assistance.

Dispensing failure

	Extreme backpressure caused by: <ul style="list-style-type: none">Kinked lube lineLong distance remote installationSmall inner diameter of lube line	 → (Activate Purge mode) <ul style="list-style-type: none">Ensure that lubricator is dispensing properly.Reinstall the lubricator after resolving the cause of backpressure.
	<ul style="list-style-type: none">Foreign material in the pumpAir pockets in the pump	<ul style="list-style-type: none">If there is foreign material in the pump. Remove the foreign material using an air gun.If the pump has Air pockets. Activate purge mode, then gently press down the hole on the upper check valve using a 1.5mm pin 2-3 times to remove the air inside.
	<ul style="list-style-type: none">When the selected dispensing period ends, LCD backlight will activate and display will blink.	<ul style="list-style-type: none">Refill the reservoir with oil, change out the battery pack, then reset the unit.

3-2. Warnings



For oils below ISO VG 100, make sure to install PLC-OL480 below the lube point to avoid oil leaks. During installation, it is recommended to coil the tubing in several loops to prevent leakage.

Please do not disassemble the screw shown in the picture. It may result in serious damage or malfunction of lubricator. The Pulsarlube PLC-OL480 is not a battery-operated product. If you require further information please refer to the technical information on the website.



- Warranty is limited to original defects in material and workmanship and will not cover any collateral damage due to mishandling, abuse and /or any other inappropriate use of this product.
- Warranty period is 1 year from the date of purchase.

 Pulsarlube USA, Inc

1170 Ardmore Ave Itasca IL 60143, USA

TEL : 1-847-593-5300 | FAX : 1-847-593-5303 | www.pulsarlube.com / info@pulsarlube.com

ISO9001/14001



Rev.02

Pulsarlube PLC-OL480

USER MANUAL

PNP TYPE

1. General Information

1-1. Product Description

Technical information is subject to change without notice.



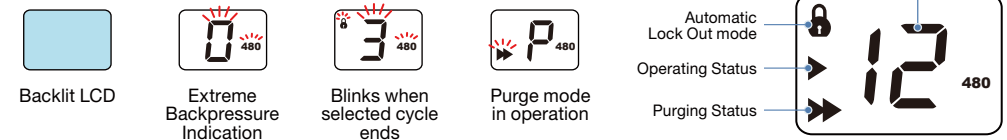
Specifications

Specifications	Description
Oil Reservoir Capacity	480ml (Refillable)
Operation Pressure	10bar (145psi) (Depends on oil viscosity)
Power Supply	DC 9 ~ 36V
Output Current	Max. 1A (1,000mA)
Operation Temperature	-20°C ~ 60°C
Available Dispensing Periods	MONTH TYPE : 1 ~ 12 Month INTERVAL TYPE : 1 ~ 6 Mode
LCD	Backlit LCD

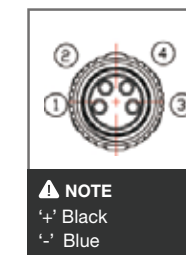


- To ensure the safe operation and proper installation of the Pulsarlube PLC-OL480 unit, we strongly recommend that you read the following information carefully before use.
- If you require further information, please contact your local supplier or manufacturer.

1-2. LCD Display Description



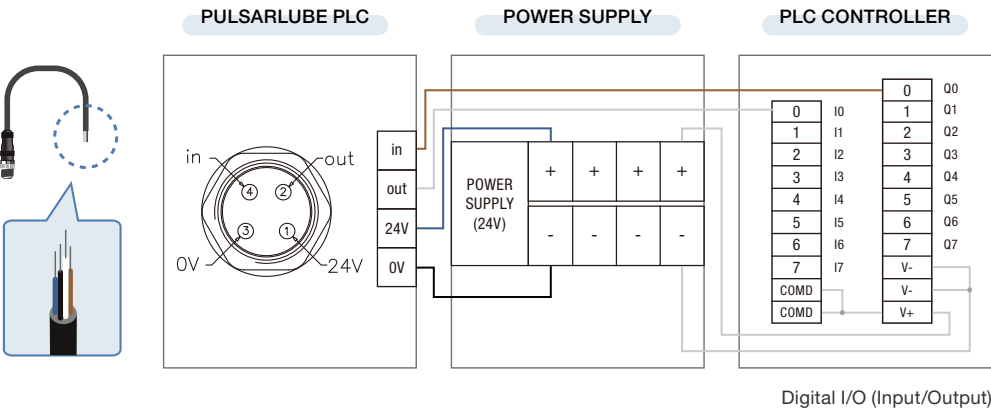
1-3. PLC Connecting Cables (colors) (Body Cable View)



①	Black	VCC (Power Supply Cable)
②	White	Signal Out (Alarm Signal Cable)
③	Blue	GND (Power Supply Cable)
④	Brown	Signal In (Operation Signal Cable)

1-3. Connection Methods (Extension Cable)

PNP TYPE (SOURCE)

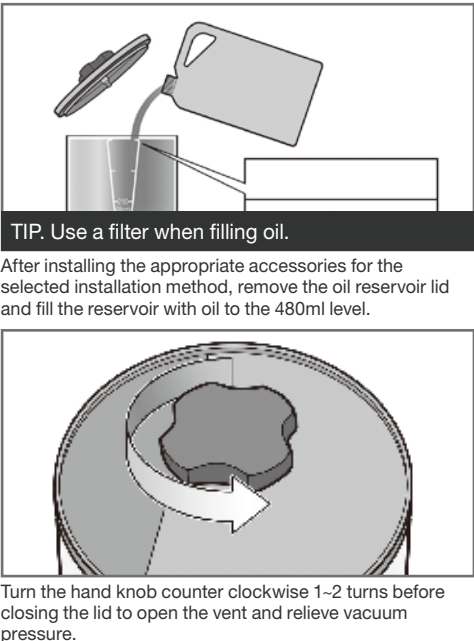
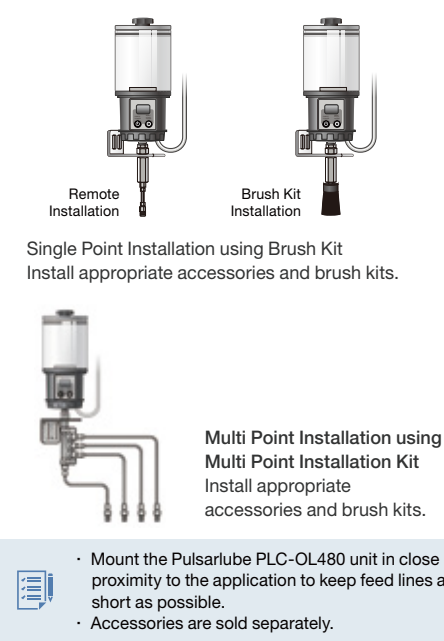


1-4. Accessories for Oil Lubrication

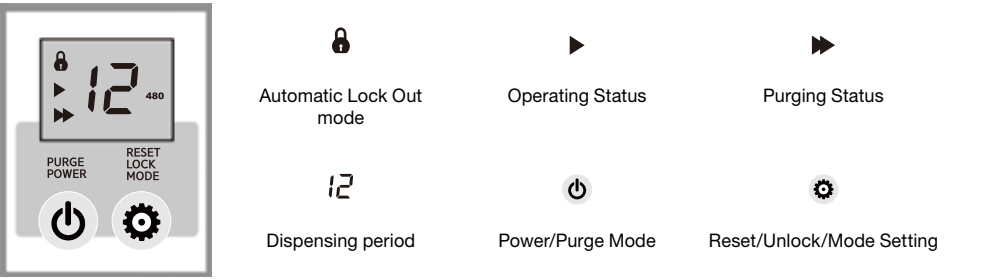
Remote / Multi Point Installation Kits (Kit No.1250RO1~4) and Brush kits (Kit No.C032~33, C044~47) are sold separately. Please refer to the Accessories page and Kit user manual on the website.

2. Installation and Operation

2-1. Installation Guidelines



2-2. LCD Display



2-3. Button & LCD Functions

To be able to perform the functions below, please make sure that the lubricator's auto lock function is deactivated by pressing the MODE button for 3 seconds.

	Power ON	Press for 3 seconds to power on.	<p>(Month Type)</p>
	Power OFF	Press for 5 seconds to power off.	
	Purge Mode	Activate : Hold the button until (P) appears on the screen Stop : Short press of the button to stop	
	Mode Setting	Short press of the MODE button to program the dispensing period. · 1 ~ 12 month for MONTH type · Mode 1 ~ 6 for INTERVAL type	
	Unlock	Press until Lock icon () disappears.	
	Reset	After lock function has been deactivated, press the MODE button for 5 seconds.	
	Backlight	Press the MODE button while holding down the POWER button.	