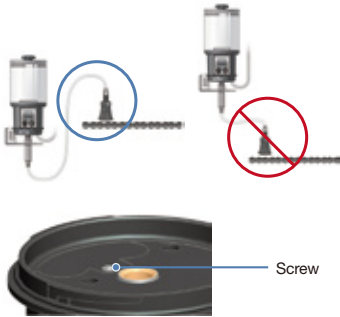


3. Reference

3-1. Troubleshooting Guidelines

Malfunctioning unit	
Normal	
Malfunction	
Dispensing failure	
	Extreme backpressure caused by: <ul style="list-style-type: none"><li>Kinked lube line</li><li>Long distance remote installation</li><li>Small inner diameter of lube line</li></ul>
	<ul style="list-style-type: none"><li>Foreign material in the pump</li><li>Air pockets in the pump</li></ul>
	<ul style="list-style-type: none"><li>When the selected dispensing period ends, LCD backlight will activate and display will blink.</li></ul>

3-2. Warnings



For oils below ISO VG 100, make sure to install PLC-OL480 below the lube point to avoid oil leaks. During installation, it is recommended to coil the tubing in several loops to prevent leakage.

Please do not disassemble the screw shown in the picture. It may result in serious damage or malfunction of lubricator. The Pulsarlube PLC-OL480 is not a battery-operated product. If you require further information please refer to the technical information on the website.

- Warranty is limited to original defects in material and workmanship and will not cover any collateral damage due to mishandling, abuse and /or any other inappropriate use of this product.
- Warranty period is 1 year from the date of purchase.

Pulsarlube USA, Inc

1170 Ardmore Ave Itasca IL 60143, USA

TEL : 1-847-593-5300 | FAX : 1-847-593-5303 | www.pulsarlube.com / info@pulsarlube.com

ISO9001/14001



Rev.02

Pulsarlube PLC-OL480  
USER MANUAL

NPN TYPE

1. General Information

1-1. Product Description

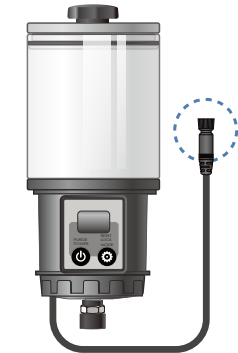
Technical information is subject to change without notice.

Specifications	Description
Oil Reservoir Capacity	480ml (Refillable)
Operation Pressure	10bar (145psi) (Depends on oil viscosity)
Power Supply	DC 9 ~ 36V
Output Current	Max. 1A (1,000mA)
Operation Temperature	-20°C ~ 60°C
Available Dispensing Periods	MONTH TYPE : 1 ~ 12 Month INTERVAL TYPE : 1 ~ 6 Mode
LCD	Backlit LCD

- To ensure the safe operation and proper installation of the Pulsarlube PLC-OL480 unit, we strongly recommend that you read the following information carefully before use.
- If you require further information, please contact your local supplier or manufacturer.

1-2. LCD Display Description

				Dispensing period
Backlit LCD	Extreme Backpressure Indication	Blinks when selected cycle ends	Purge mode in operation	Automatic Lock Out mode
				Operating Status
				Purging Status



1-3. PLC Connecting Cables (colors) (Body Cable View)

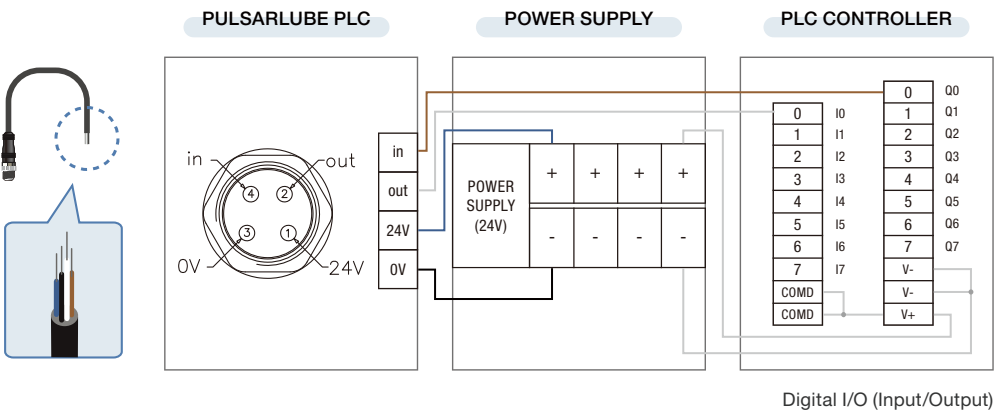
	Blue	VCC (Power Supply Cable)
	White	Signal Out (Alarm Signal Cable)
	Black	GND (Power Supply Cable)
	Brown	Signal In (Operation Signal Cable)

NOTE

- Blue
- Black

1-3. Connection Methods (Extension Cable)

NPN TYPE (SINK)



1-4. Accessories for Oil Lubrication

Remote / Multi Point Installation Kits (Kit No.1250RO1~4) and Brush kits (Kit No.C032~33, C044~47) are sold separately. Please refer to the Accessories page and Kit user manual on the website.

2. Installation and Operation

2-1. Installation Guidelines

Remote Installation

Brush Kit Installation

Single Point Installation using Brush Kit  
Install appropriate accessories and brush kits.

Multi Point Installation using Multi Point Installation Kit  
Install appropriate accessories and brush kits.

- Mount the Pulsarlube PLC-OL480 unit in close proximity to the application to keep feed lines as short as possible.
- Accessories are sold separately.

TIP. Use a filter when filling oil.

After installing the appropriate accessories for the selected installation method, remove the oil reservoir lid and fill the reservoir with oil to the 480ml level.

Turn the hand knob counter clockwise 1~2 turns before closing the lid to open the vent and relieve vacuum pressure.

2-2. LCD Display

PURGE POWER

RESET LOCK MODE

Automatic Lock Out mode

Operating Status

Purging Status

Dispensing period

Power/Purge Mode

Reset/Unlock/Mode Setting

2-3. Button & LCD Functions

To be able to perform the functions below, please make sure that the lubricator's auto lock function is deactivated by pressing the MODE button for 3 seconds.

Power ON

Press for 3 seconds to power on.

(Month Type)

(Interval Type)

Power OFF

Press for 5 seconds to power off.

Purge Mode

Activate : Hold the button until ( P ) appears on the screen  
Stop : Short press of the button to stop

Mode Setting

Short press of the MODE button to program the dispensing period.  
· 1 ~ 12 month for MONTH type  
· Mode 1 ~ 6 for INTERVAL type

Unlock

Press until Lock icon ( ) disappears.

Reset

After lock function has been deactivated, press the MODE button for 5 seconds.

Backlight

Press the MODE button while holding down the POWER button.