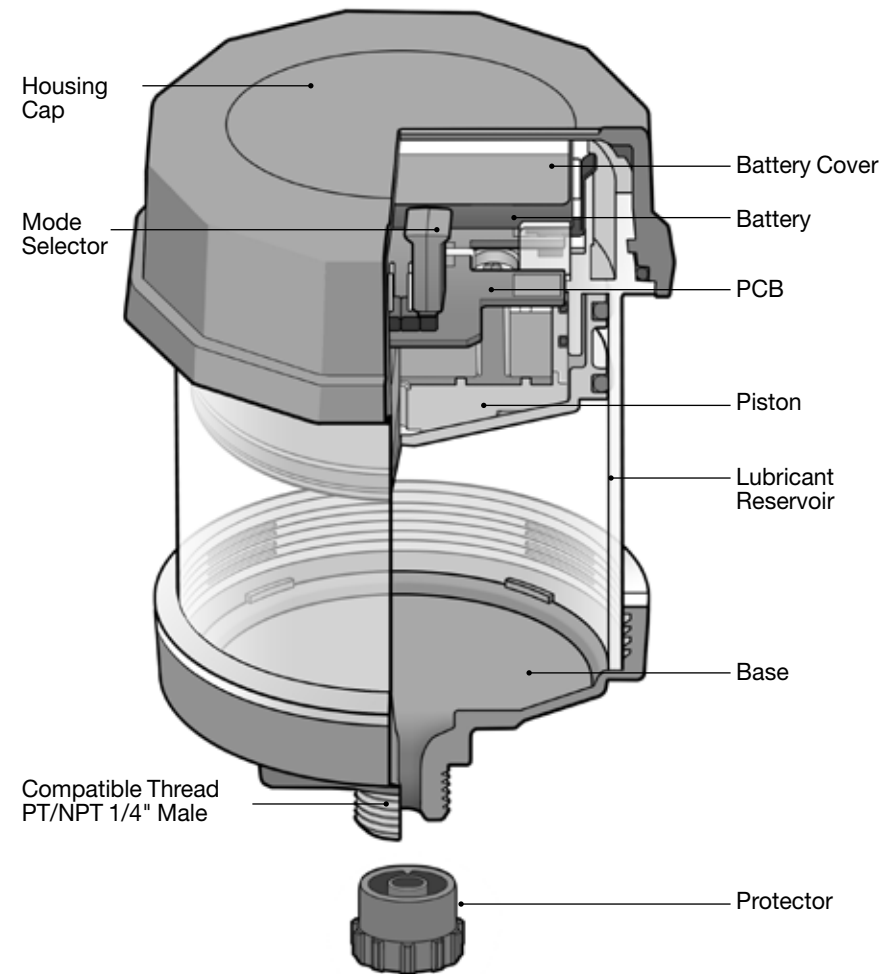
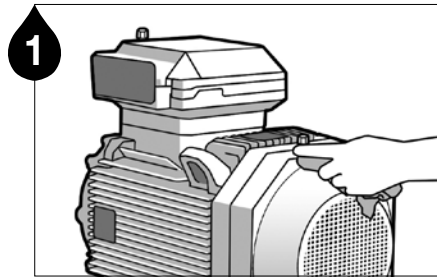


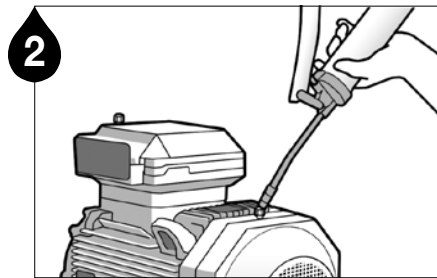
Product Details



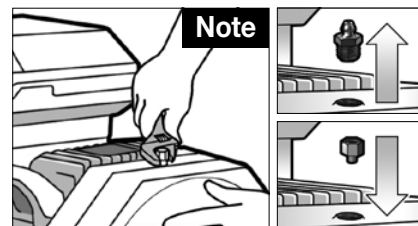
Installation/Disposal Guidelines



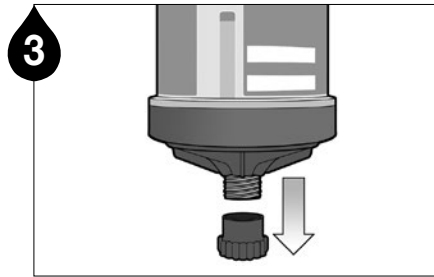
Remove contaminants around the lube point.



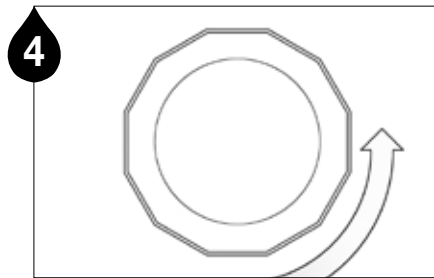
Ensure a clear passage using a manual grease gun. **Note1** Remove any hardened grease by purging the lube point with a manual grease gun. **Note2** The grease in the equipment and the grease contained in the unit must be the same or compatible.



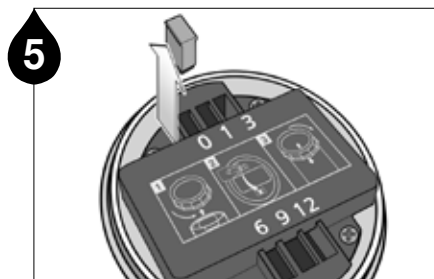
Remove the grease nipple and install appropriate adaptors.



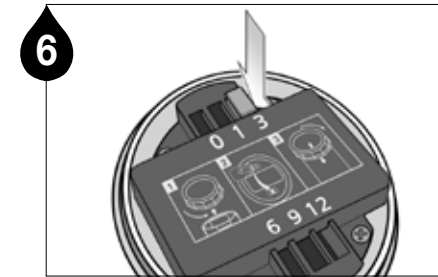
Remove the protector.



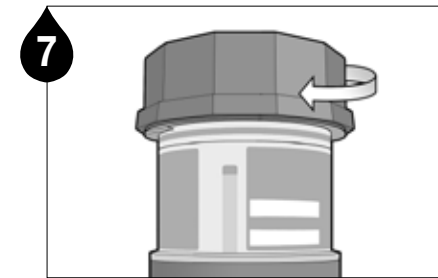
Turn the housing cap counterclockwise and unscrew the cap.



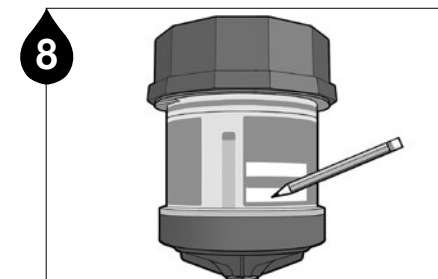
Pull out the yellow Mode Selector from the default OFF position.



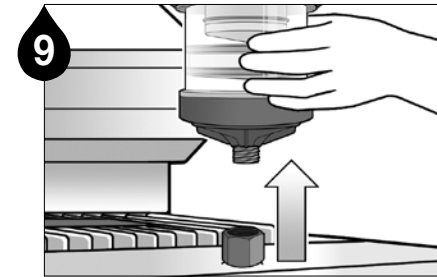
Firmly push the Mode Selector into the slot of the desired period.



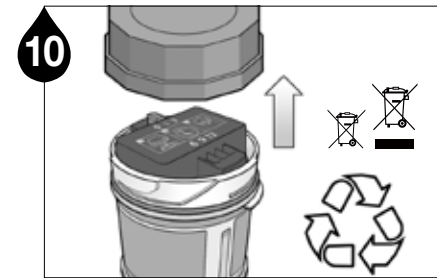
Screw the housing cap on the body.



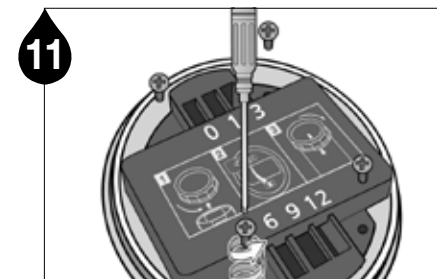
Note the installation date and the scheduled date of lube cycle completion on the label of the Pulsarlube E. **Note** Please note there is a delay before the actual dispensing starts. It may take up to 1-3 weeks for enough gas to be formed depending on the dispensing setting & installation condition.



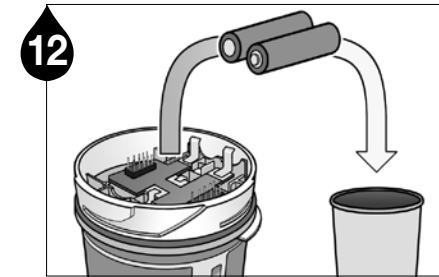
When the selected dispensing period of the Pulsarlube E has completed, remove the lubricator from the application.



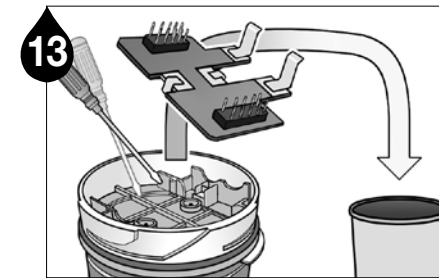
The Pulsarlube E is an eco-friendly product that can be disposed of separately. Turn the housing cap counterclockwise to disassemble the product for proper disposal.



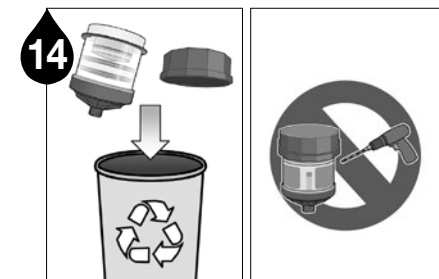
Unscrew the screws to remove the battery cover.



Remove the batteries.



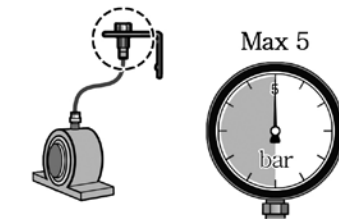
Using a hand tool such as a flat-head screwdriver, detach the PCB from the unit.



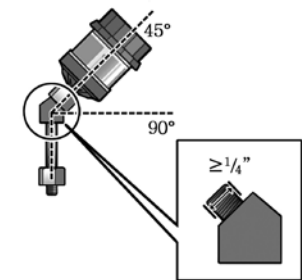
Dispose of remaining plastic components complying with local regulations for recycling. **Warning** Do not cut, puncture, or reuse lubricator.

Mounting Installations

High backpressure can cause a delay in dispensing (must be under 5bar).



If the product is installed at a 45° or 90° angle, please use an angle adapter with a diameter greater than or equal to 1/4".



For remote installation using an Ø8 tube, keep the maximum distance at 1m (3ft) or less.

